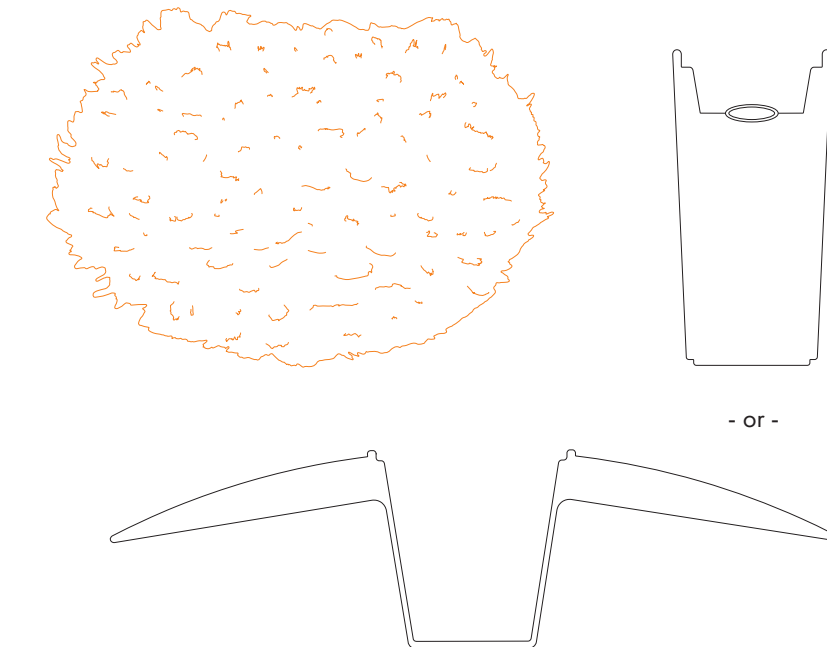


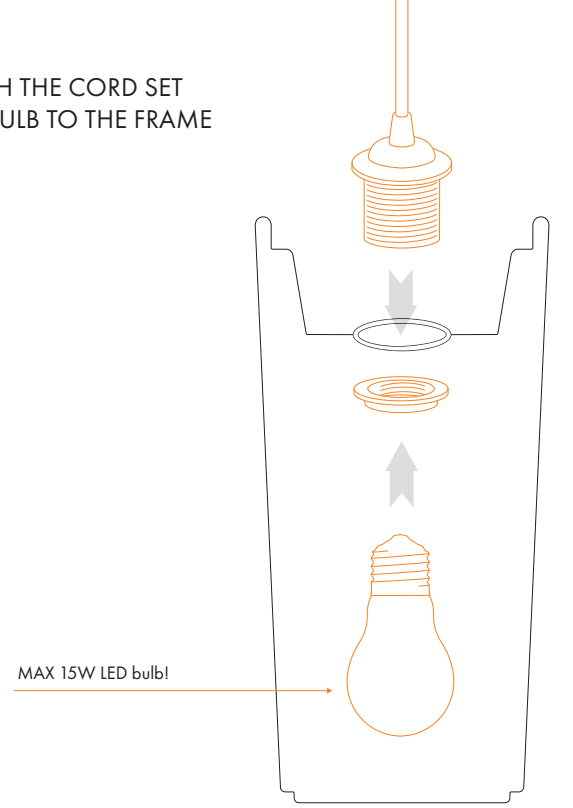
Please give the feathers time to readjust to their original shape.

It may take up to two weeks, but you can help them along by running your fingers carefully through the feathers.

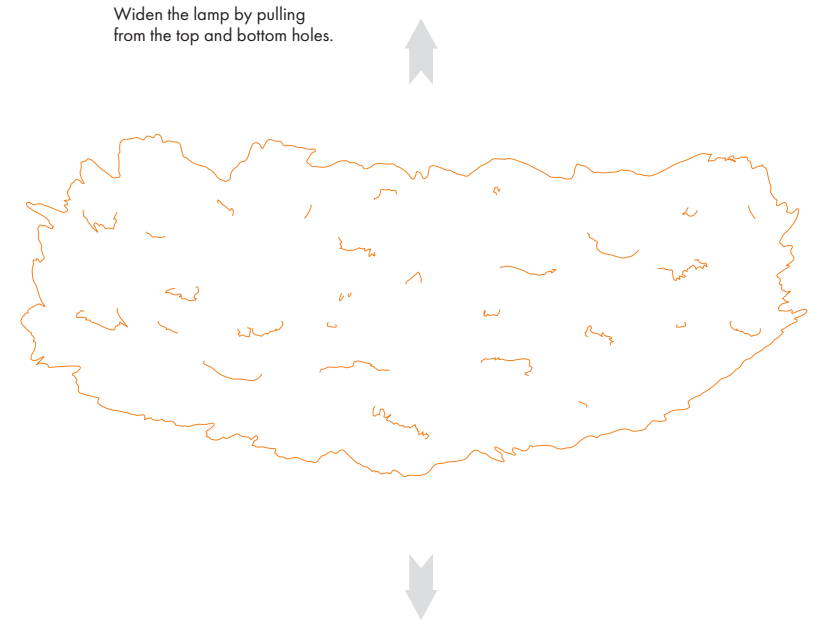
IN THE BOX



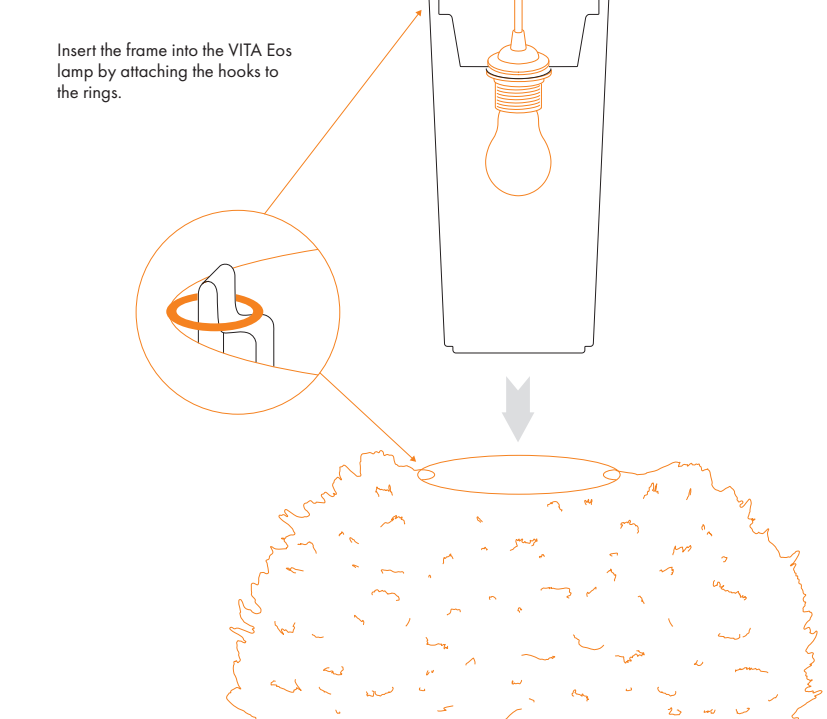
1 ATTACH THE CORD SET AND BULB TO THE FRAME



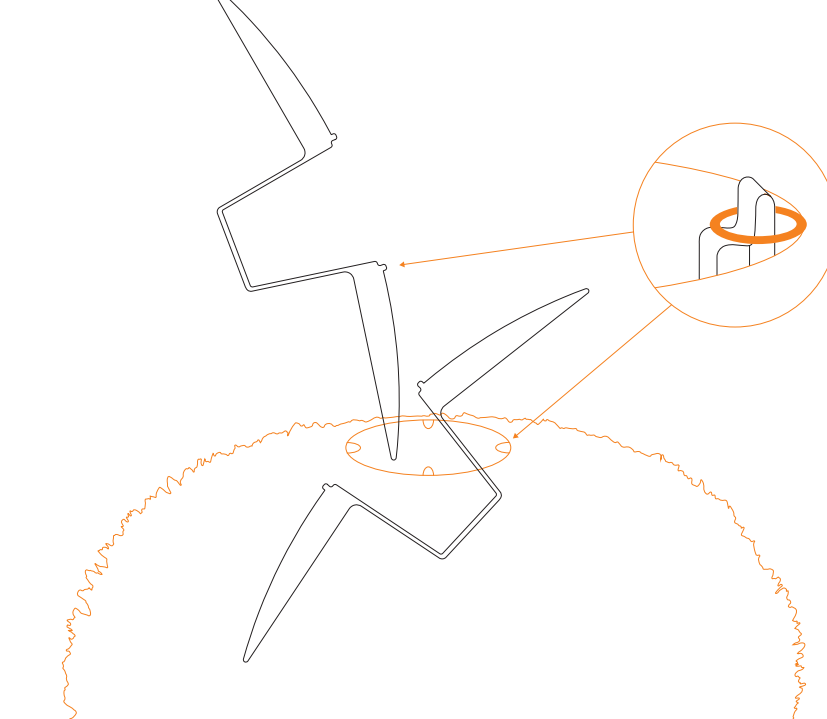
2 EXPAND EOS



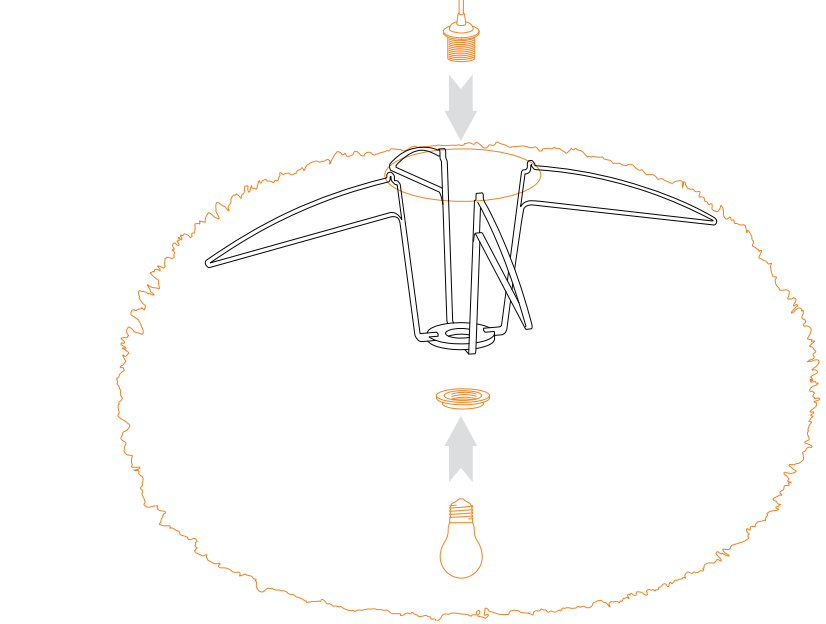
3 INSERT FRAME



1 EOS XX-LARGE



2 EOS XX-LARGE



Cleaning tips

Keep the lamp clean using a hair dryer on the coolest setting, 25 cm (10") from the lamp and blow the loose dust from the feathers. Use a damp cloth for dust that is difficult to remove.

Always keep the lamp away from fire.

FOLLOW US ON SOCIAL MEDIA



#vitacopenhagen

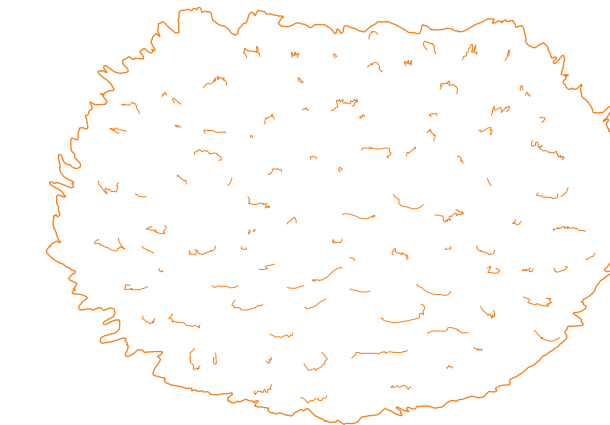
www.vitacopenhagen.com



Find assembly videos for all VITA lamps online at our website



VITA Eos



assembly guide