

Pablo®

SOLIS

ASSEMBLY & INSTALLATION INSTRUCTIONS

TABLE OF CONTENTS

pg. 2-5.....	SOLIS 120V
pg. 6-9.....	SOLIS 220V



Pablo®

SOLIS

120V ASSEMBLY & INSTALLATION INSTRUCTIONS

INFO@PABLODESIGNS.COM
888 MARIN STREET
SAN FRANCISCO, CA
94124

PABLODESIGNS.COM



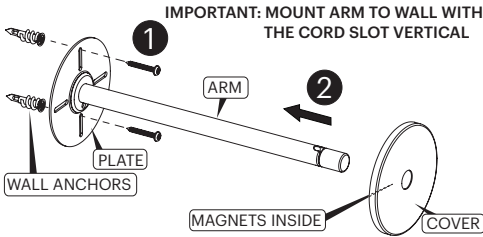
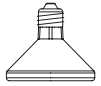
Pablo® SOLIS

1. ATTACH ARM ASSEMBLY TO WALL
2. SLIDE COVER ONTO ARM
3. SLIP CORD INTO ARM SLOT FROM BELOW
4. TIGHTEN CORD CLAMP KNOB
5. ROUTE CORD AND DIMMER THROUGH SOLIS (IMPORTANT: USE THE CORD GUIDE TO KEEP CORD AWAY FROM BULB)

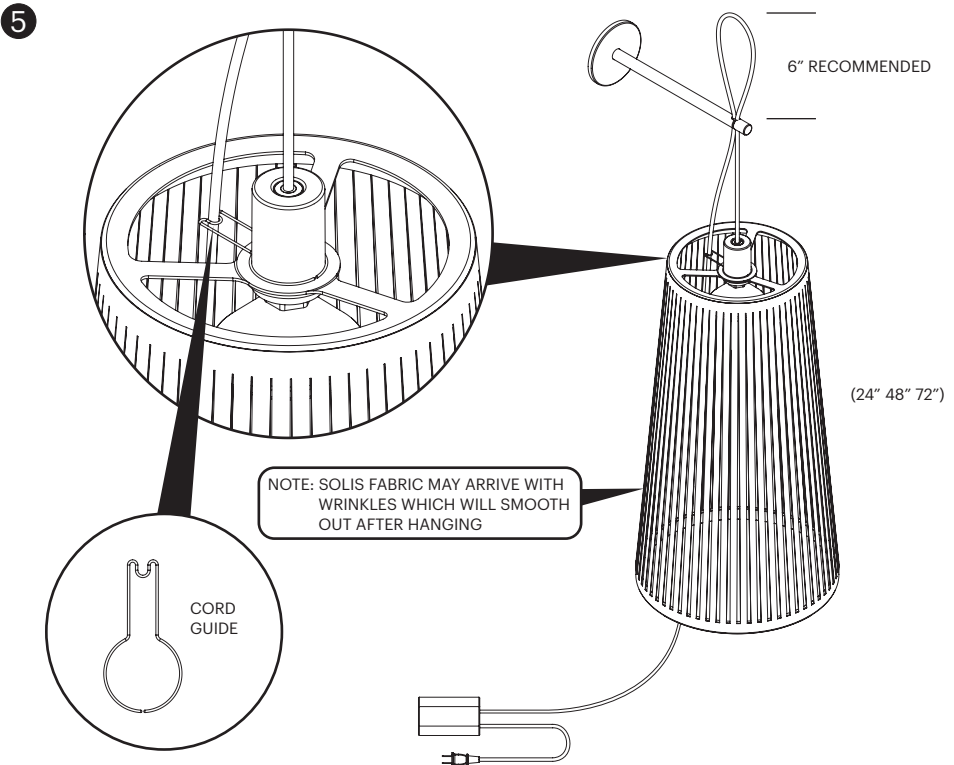
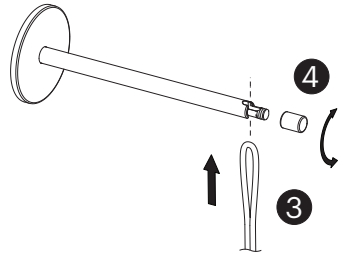
BULB TYPE
75W PAR 30 120V NARROW SPOT

LENGTH OF CORD SUPPLIED
16FT (488CM)

CARE INSTRUCTIONS
WIPE CLEAN WITH A SOFT DAMP CLOTH.
AVOID AMMONIA-BASED CLEANERS.



NOTE : WALL ANCHORS ARE SUPPLIED WITH SOLIS.
USE ONLY IF APPROPRIATE FOR YOUR WALL TYPE.



Pablo® SOLIS

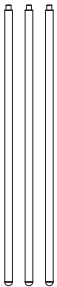
1. ASSEMBLE ALL LEG SETS TOGETHER FIRST AND THREAD THEM INTO THE UPPER BRACKET MAKING SURE THEY ARE FULLY TIGHTENED
2. REMOVE LAMP SOCKET ASSEMBLY BY UNSCREWING BULB AND CHECK RING
3. GENTLY POSITION AND LOWER THE UPPER LAMP ASSEMBLY OVER THE TRIPOD BASE AND SECURE THE LAMP SOCKET TO THE UPPER BRACKET OF TRIPOD BASE AND SECURE 75W PAR 30 NSP BULB IN PLACE
4. LINE UP CLIPS WITH LEGS AND PUSH EACH LEG INTO CORRESPONDING CLIP AS SHOWN

24"

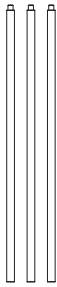
1X
UPPER
TRIPOD
BRACKET



3X
LOWER
LEGS



3X
LOWER
LEGS



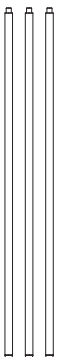
FOOT

48"

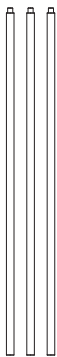
1X
UPPER
TRIPOD
BRACKET



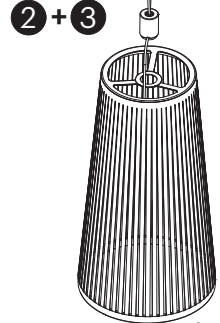
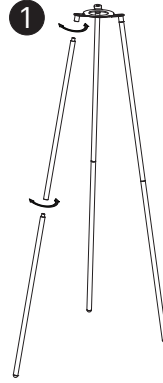
3X
LOWER
LEGS



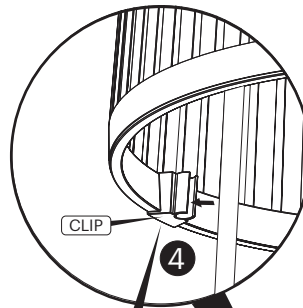
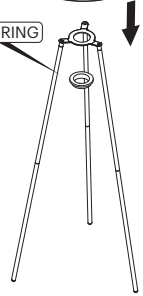
6X
LOWER
LEGS



FOOT



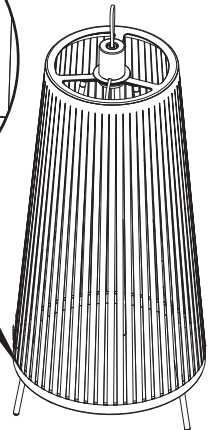
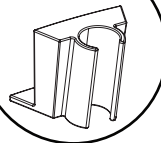
CHECK RING



CLIP

4

3X PLASTIC CLIP



Pablo®

SOLIS

220V ASSEMBLY & INSTALLATION INSTRUCTIONS

INFO@PABLODESIGNS.COM
888 MARIN STREET
SAN FRANCISCO, CA
94124

PABLODESIGNS.COM



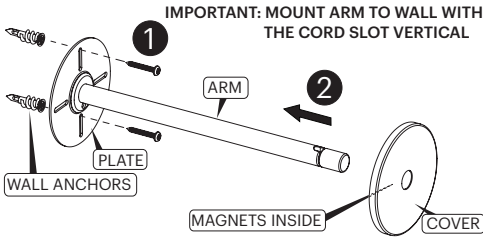
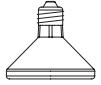
Pablo® SOLIS

1. ATTACH ARM ASSEMBLY TO WALL
2. SLIDE COVER ONTO ARM
3. SLIP CORD INTO ARM SLOT FROM BELOW
4. TIGHTEN CORD CLAMP KNOB
5. ROUTE CORD AND DIMMER THROUGH SOLIS (IMPORTANT: USE THE CORD GUIDE TO KEEP CORD AWAY FROM BULB)

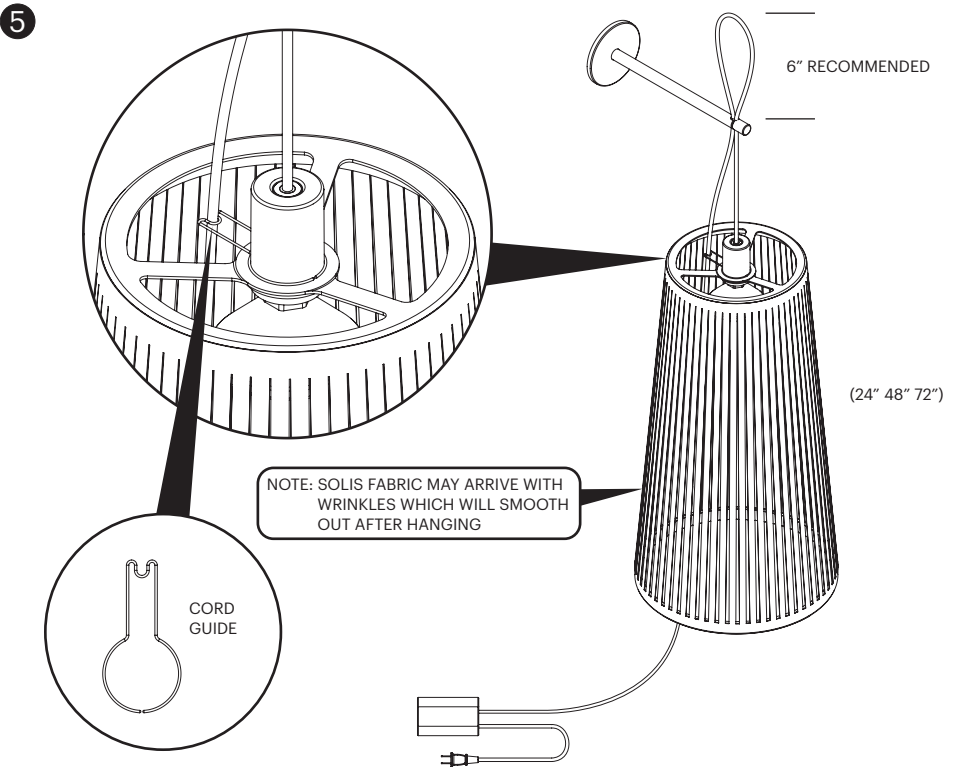
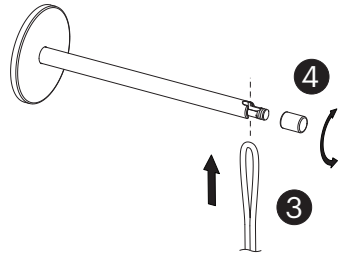
BULB TYPE
75W PAR 30 120V NARROW SPOT

LENGTH OF CORD SUPPLIED
16FT (488CM)

CARE INSTRUCTIONS
WIPE CLEAN WITH A SOFT DAMP CLOTH.
AVOID AMMONIA-BASED CLEANERS.



NOTE : WALL ANCHORS ARE SUPPLIED WITH SOLIS.
USE ONLY IF APPROPRIATE FOR YOUR WALL TYPE.

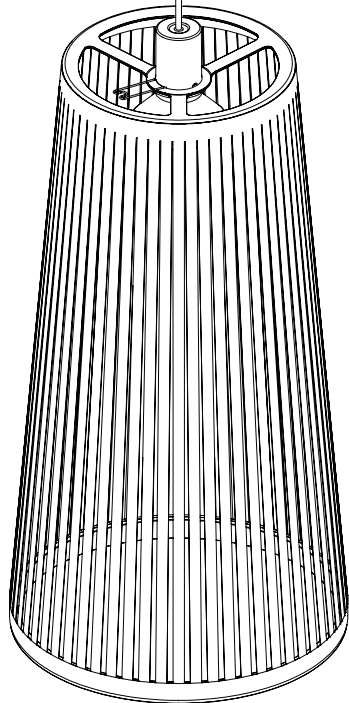
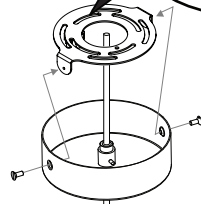
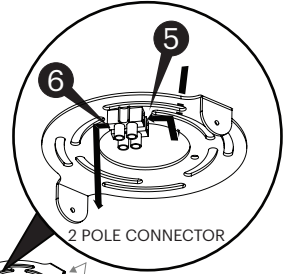
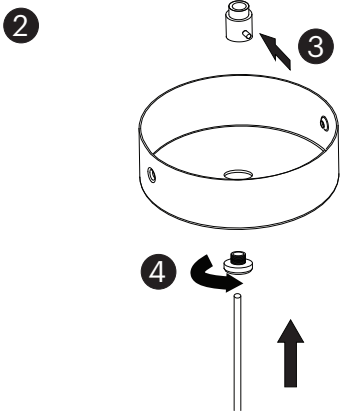
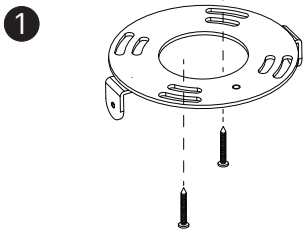


Pablo® SOLIS

1. ATTACH MOUNTING PLATE TO JUNCTION BOX
2. ROUTE CORD THROUGH COVER, CEILING ADAPTOR AND STRAIN RELIEF
3. SET STRAIN RELIEF TO DESIRED HEIGHT AND CUT CORD
4. THREAD CEILING ADAPTOR INTO STRAIN RELIEF CAPTURING COVER
5. CONNECT BUILDING WIRING INTO 2 POLE CONNECTOR
6. CONNECT LAMP WIRING INTO OTHER END OF CONNECTOR
7. SLIDE COVER UP TO CEILING, SECURE COVER TO PLATE WITH SUPPLIED SCREWS

NOTE: BEFORE CUTTING, WRAP CORD WITH ELECTRICAL TAPE TO PREVENT THE FABRIC SLEEVE FROM FRAYING

IMPORTANT: WE RECOMMEND CEILING MOUNTING OPTION BE INSTALLED BY AN ELECTRICIAN



Pablo® SOLIS

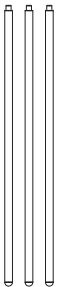
1. ASSEMBLE ALL LEG SETS TOGETHER FIRST AND THREAD THEM INTO THE UPPER BRACKET MAKING SURE THEY ARE FULLY TIGHTENED
2. REMOVE LAMP SOCKET ASSEMBLY BY UNSCREWING BULB AND CHECK RING
3. GENTLY POSITION AND LOWER THE UPPER LAMP ASSEMBLY OVER THE TRIPOD BASE AND SECURE THE LAMP SOCKET TO THE UPPER BRACKET OF TRIPOD BASE AND SECURE 75W PAR 30 NSP BULB IN PLACE
4. LINE UP CLIPS WITH LEGS AND PUSH EACH LEG INTO CORRESPONDING CLIP AS SHOWN

24"

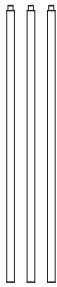
1X
UPPER
TRIPOD
BRACKET



3X
LOWER
LEGS



3X
LOWER
LEGS



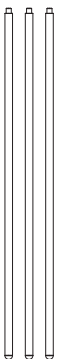
FOOT

48"

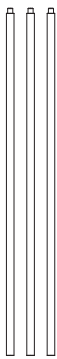
1X
UPPER
TRIPOD
BRACKET



3X
LOWER
LEGS



6X
LOWER
LEGS



FOOT

